

FOR LAKE LINE CONNECTIONS PER MERCER ISLAND AND
 LOCATE SO MIN 2' ABOVE LAKE LEVEL. USE PD 0717E

CONDITION OF EXISTING SANITARY SIDE SEWER
 AND DEFECTIVE AS DETERMINED BY CITY INSPECTOR

REQUIREMENTS

1. WATER SERVICE & METER PIT CONFIRM REQUIRED
 2. PERMIT REVIEW INST ALL PER MERCER ISLAND
 OR W 144 DEPENDING ON SIZE REQUIREMENT
 3. RATE HOPE WATER (ASTM D2239) FROM METER TO
 MINED DEPTH=36" COORDINATE HOUSE ENTRY WITH

4. BACKFLOW ASSEMBLY (RPBA) DEVICE REQUIRED
 DETECTION IN ACCORDANCE WITH UNIFORM

5. 10" (4" MIN 2% GRADE

6. RAIN (3034 PVC) @ MIN 1% GRADE

7. 20" (4" MIN 2% GRADE

NOTES

LD LD

8. CHANNEL DRAIN OR EQUAL MINIMUM 6"
 VEHICLE RATED GRATE

9. 10" IN DRIVEWAY ADD WATER QUALITY RISER
 PIPE (OR DOWN TURNED ELBOW).

10. SOIL IS REQUIRED FOR DISTURBED AREAS. SEE

11. DISTANCE OF 102.56' TO THE SOUTH LINE OF SAID LOT 4 AND THE
 TERMINUS OF THIS LINE

12. TOGETHER WITH SECOND CLASS SHORELANDS ADJOINING AS
 DELINEATED ON THE FACE OF THE PLAT

13. TOGETHER WITH AN UNDIVIDED INTEREST IN TRACT A (COMMUNITY
 BEACH) AND SECOND CLASS SHORELANDS ADJACENT TO AND
 ABUTTING THEREON

14. AND TOGETHER WITH AN EASEMENT FOR INGRESS, EGRESS AND
 UTILITY PURPOSES OVER THE 10 FOOT PRIVATE ROAD AS DELINEATED
 ON THE FACE OF THE PLAT

15. SUBJECT TO ALL EASEMENTS, RESTRICTIONS AND RESERVATIONS OF
 RECORD, IF ANY

CAUTION-TREE ROOTS

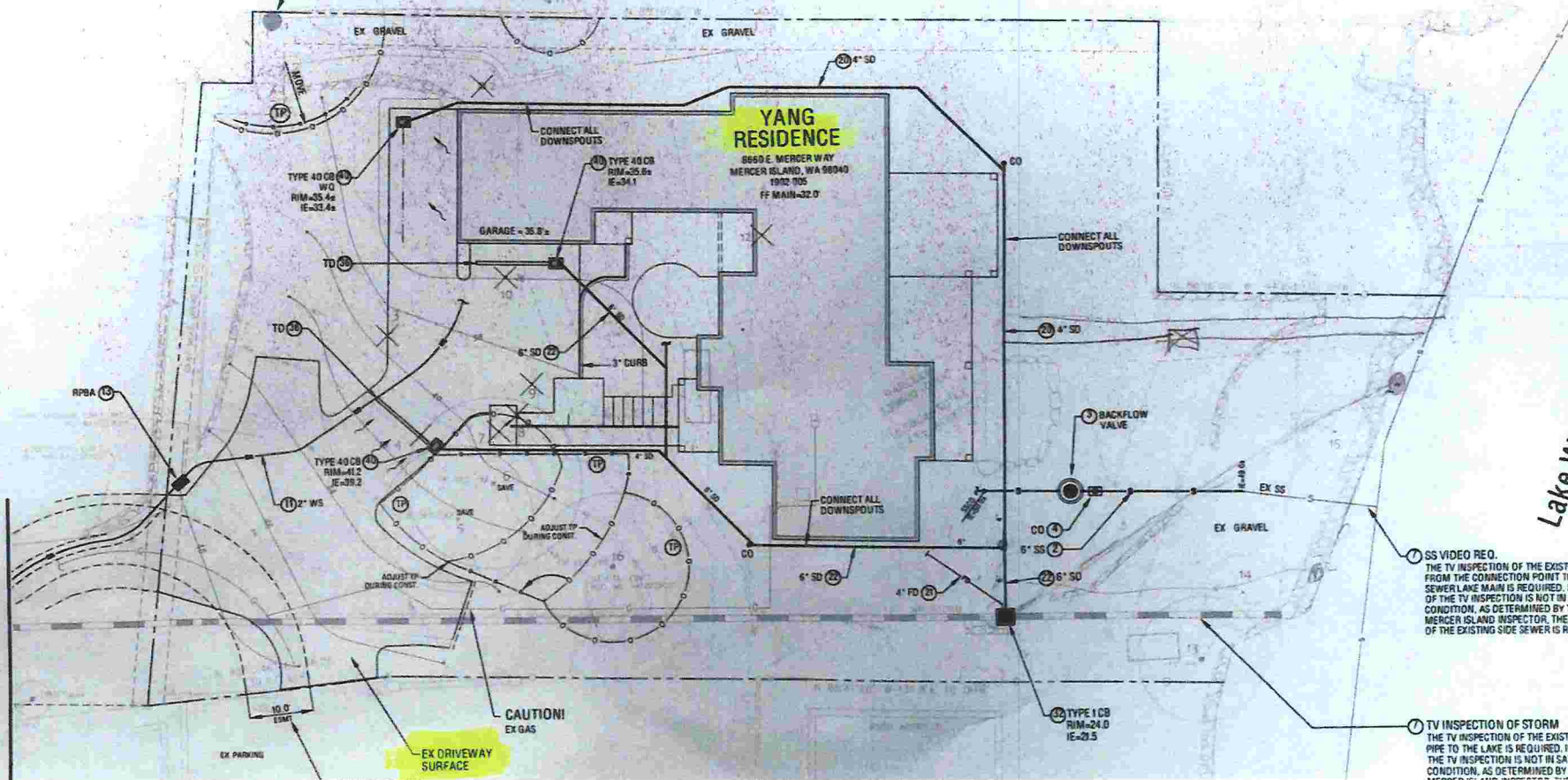
(A) SEE CLEARING NOTE
 (B) SEE DIAPHRAGM NOTE



1"=10'



MATCHLINE - SEE C2.1



Lake Wa...

1. SS VIDEO REQ.
 THE TV INSPECTION OF THE EXISTING
 FROM THE CONNECTION POINT TO THE
 SEWER LAKE MAIN IS REQUIRED. IF THE
 OF THE TV INSPECTION IS NOT IN SATISF
 CONDITION, AS DETERMINED BY THE
 MERCER ISLAND INSPECTOR, THE RE
 OF THE EXISTING SIDE SEWER IS REQ

2. TV INSPECTION OF STORM
 THE TV INSPECTION OF THE EXISTING
 PIPE TO THE LAKE IS REQUIRED. IF THE
 OF THE TV INSPECTION IS NOT IN SATISF
 CONDITION, AS DETERMINED BY TH